

GERDANIYE BUSELİK PEŞREV

USÛL: ZENCİR
Birinci Hane

BESTE: TANBURI ISAK
(Izak Fresco Monaro)

ÇİFTE DÜYEK

Musical notation for FAHTE: Treble clef, key signature of one sharp (F#), time signature of 20/4. The melody consists of eighth notes.

ÇEMBER

28
DEVİR-İ KEBİR

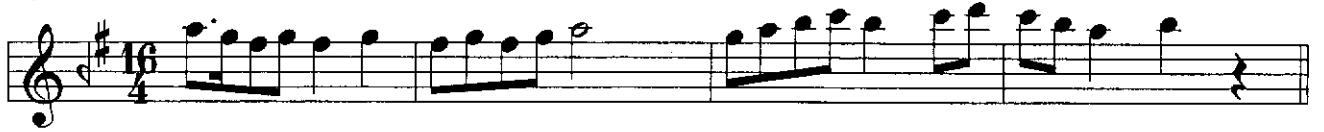
Mülâzime §

The musical notation for the Hane'ye melody is presented in three variations, labeled I, II, and III. Each variation is written on a single staff with a treble clef and a key signature of one sharp (F#). The melody consists of a sequence of notes, including a triplet of eighth notes in each variation. Variation I starts with a quarter note G#4, followed by an eighth note A4, a quarter note B4, and a quarter note C5. Variation II starts with a quarter note G#4, followed by an eighth note A4, a quarter note B4, and a quarter note C5. Variation III starts with a quarter note G#4, followed by an eighth note A4, a quarter note B4, and a quarter note C5.

İkinci Hane



Üçüncü Hane



Dördüncü Hane





Bu eser TRT Müzik Dairesi Arşivi'nden alınmıştır.